



ACTUAL PHOTOGRAPH

# *Signature* RESORT TOWERS

**a**  
**ACEGROUP**  
fulfilling ACEpirations

**ACE**  
**golfshire**  
SECTOR -150, NOIDA



# RESORT LIVING COMES TO SECTOR 150, NOIDA

IN THE HEART OF THE CITY  
WITH SEAMLESS CONNECTIVITY



# UPCOMING JEWAR INTERNATIONAL AIRPORT



ARTIST'S IMPRESSION



ARTIST'S IMPRESSION

## UPCOMING AQUA METRO LINE



ARTIST'S IMPRESSION

## UPCOMING EASTERN PERIPHERAL ROAD



RESORT STYLE RESIDENCES



# RESORT LANDSCAPING - CENTRAL GARDEN



ACTUAL PHOTOGRAPH



# RESORT LANDSCAPING - VERTICAL GREEN WALL



ACTUAL PHOTOGRAPH



# RESORT AMENITIES - KIDS PLAY AREA



ACTUAL PHOTOGRAPH



# RESORT AMENITIES - TENNIS COURT



ACTUAL PHOTOGRAPH



# RESORT INDULGENCES - GEETANJALI STUDIO



ACTUAL PHOTOGRAPH



# RESORT INDULGENCES - STATE-OF-THE-ART GYM



ACTUAL PHOTOGRAPH



# RESORT INDULGENCES - LAUNDRY SERVICES



ARTIST'S IMPRESSION



# RESORT CONVENIENCES - DANCE CLASSES



ARTIST'S IMPRESSION



# RESORT CONVENIENCES - GOLF CART



ARTIST'S IMPRESSION



# RESORT CONVENIENCES - SHUTTLE SERVICES

A black silhouette of a shuttle bus is centered within a white rectangular frame. The words "SHUTTLE SERVICES" are printed in a white, serif, all-caps font across the middle of the bus's body. The bus is shown from a side profile, facing right, with two large circular wheels visible.

SHUTTLE SERVICES



# RESORT CLUB



ACTUAL PHOTOGRAPH





# RESORT CLUB - THE DOME

ACTUAL PHOTOGRAPH



# RESORT CLUB - MULTIPURPOSE HALL



ACTUAL PHOTOGRAPH



# RESORT CLUB - COFFEE SHOP



ACTUAL PHOTOGRAPH



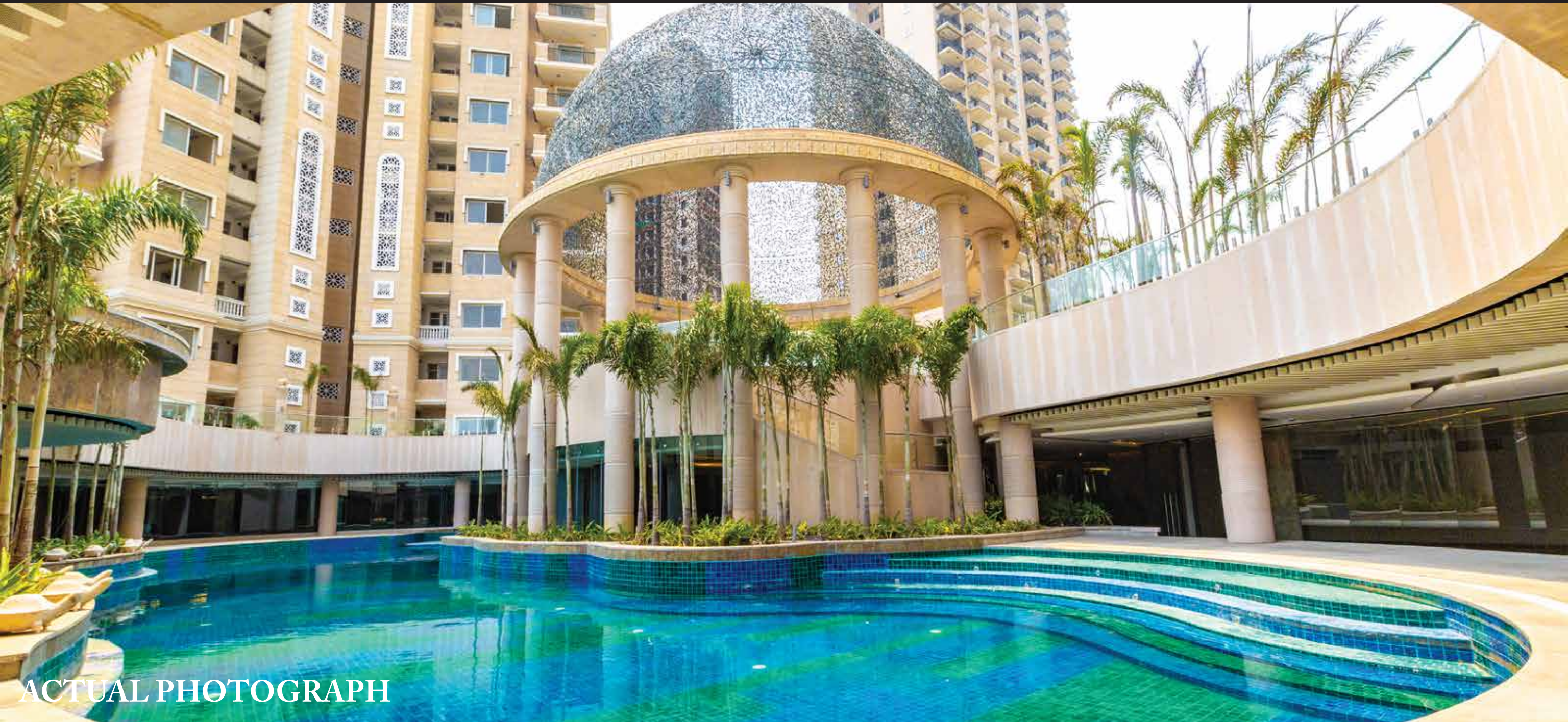
# RESORT CLUB - GAMES ROOM



ACTUAL PHOTOGRAPH



# RESORT CLUB - SWIMMING POOL



ACTUAL PHOTOGRAPH



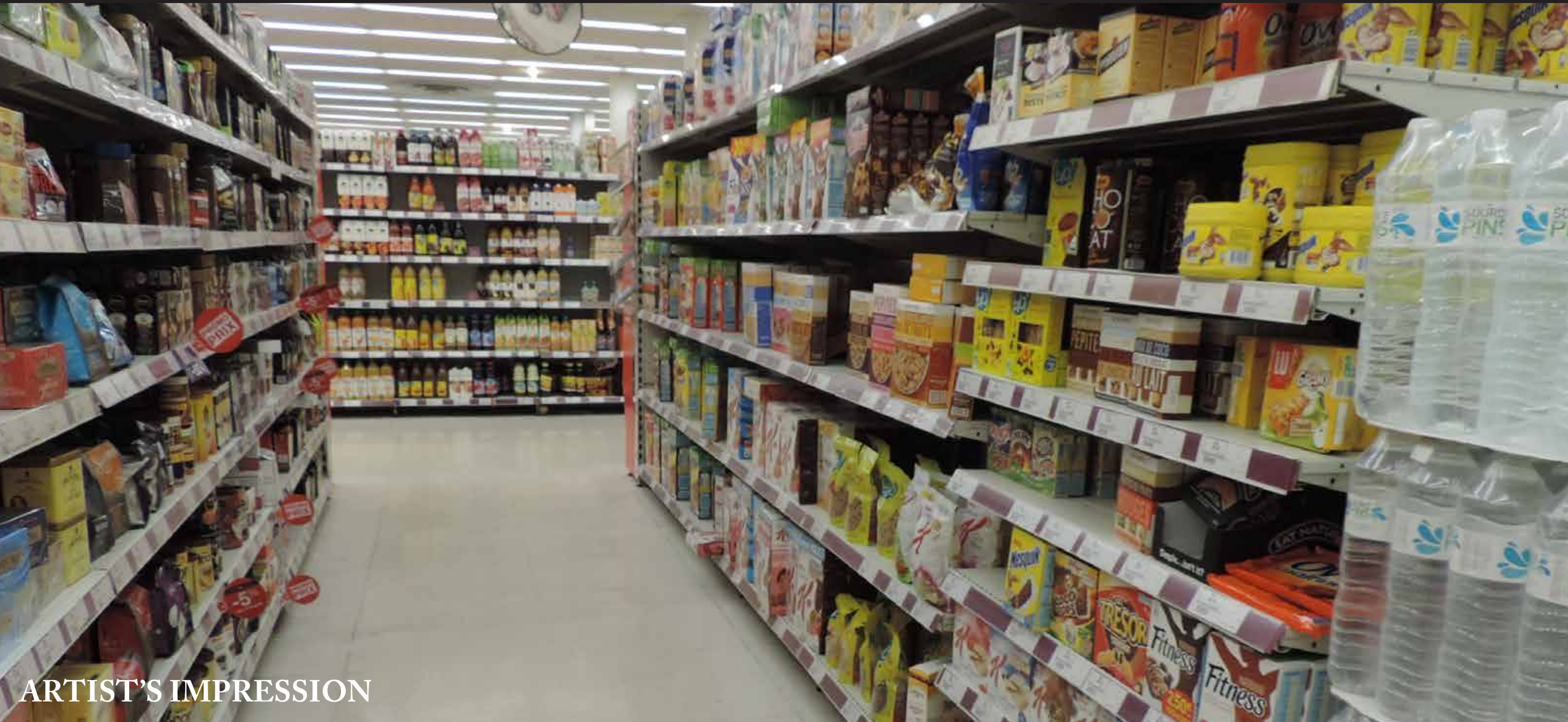
# RESORT CLUB - RESTAURANT



ARTIST'S IMPRESSION



# RESORT CLUB - SUPER MARCHÉ



ARTIST'S IMPRESSION



# RESORT LUXURIES - LAVISH ENTRANCE LOBBIES



ACTUAL PHOTOGRAPH



# RESORT LUXURIES - EXTRAVAGANT LIGHTING



ACTUAL PHOTOGRAPH



*Signature*  
RESORT TOWERS

FOR THE FIRST TIME IN NOIDA, 150  
READY-TO-REGISTER TOWER LAUNCH



# SIGNATURE SPECS - MODULAR KITCHEN



ARTIST'S IMPRESSION



# SIGNATURE SPECS - WARDROBE (ALL BEDROOMS)



ARTIST'S IMPRESSION



# SIGNATURE SPECS - AIRCONDITIONING (ALL BEDROOMS)



ARTIST'S IMPRESSION



# SIGNATURE SPECS - HOME AUTOMATION (MASTER BEDROOM)



ARTIST'S IMPRESSION



# ACTIVATION BLUE-PRINT



PRE-BLOCKING WINDOW

14<sup>TH</sup> MAY - 9<sup>TH</sup> JUNE 2018

ALLOTMENT DAY

10<sup>TH</sup> JUNE 2018



# PAYMENT PLAN (10:30:60)

TIMELINE	AMOUNT DUE
Booking Amount	₹ 1 lakh
Within 15 Days	10% - Booking Amount
Within 45 Days	30%
Within 120 Days	60%



# PRICING - SIGNATURE RESORT TOWERS



## PRICING - SIGNATURE RESORT TOWERS (4 & 5)

Unit Type	Pre-Blocking Window Starting Ticket Price*	Allotment Day Starting Ticket Price*
3 BHK	₹ 90.9 Lakhs	₹ 95.9 Lakhs
3 BHK + SERVANT	₹ 1.15 Cr	₹ 1.20 Cr

### Signature Specifications:

Modular Kitchen, Wardrobe in all bedrooms, Airconditioning in all Bedrooms,  
Home Automation (Master Bedroom)

\*Club membership & Possession charges extra



# PRICING - TOWERS 2,3



# PRICING - TOWERS 2,3

Unit Type	Pre-Blocking Window Starting Ticket Price*	Allotment Day Starting Ticket Price*
3 BHK	₹ 83 Lakhs	₹ 88 Lakhs
3 BHK + SERVANT	₹ 1.05 Cr	₹ 1.10 Cr

Standard Specifications

\*Club membership & possession charges extra

# MASTER LAYOUT PLAN



12 METER WIDE ROAD





# FLOOR PLANS





TYPICAL FLOOR UNIT  
3 BHK  
SUPER BUILT-UP  
AREA: 1,675 SQ.FT.



TYPICAL FLOOR UNIT  
3 BHK + SERVANT  
SUPER BUILT-UP  
AREA: 2,095 SQ.FT.





# SEE YOU AT SIGNATURE RESORT TOWERS

ACTUAL PHOTOGRAPH

All specifications, designs, layout images, conditions are only indicative and some of these can be changed at the discretion of the builder/architect/authority. These are purely conceptual and constitute no legal offerings. Applicant / Allottee shall not have any right to raise objection in this regard.